



45 Ludlow Road, Feltham, TW13 7JE

£335,000

45 Ludlow Road, Feltham, TW13 7JE

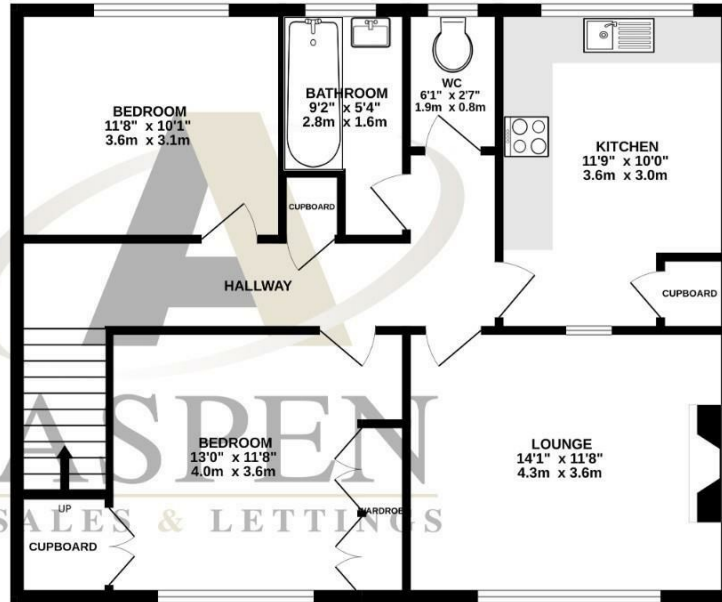
Sold with NO ONWARD CHAIN is this well-presented first floor maisonette offered with a share of freehold, ideally situated within easy reach of local amenities and excellent transport links. A particular feature of the property is the private and secluded rear garden perfect for relaxing or outdoor dining. The property offers well-proportioned accommodation including two good-size double bedrooms, a bright and comfortable living room, separate bathroom to W.C, and a spacious kitchen / dining room ideal for everyday living and entertaining.



Floor Plan

GROUND FLOOR
62 sq. ft. (5.8 sq.m.) approx.

1ST FLOOR
795 sq. ft. (73.5 sq.m.) approx.



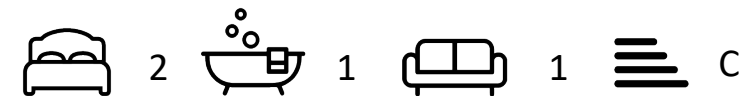
TOTAL FLOOR AREA : 857 sq.ft. (79.6 sq.m.) approx.

Whilst every attempt has been made to ensure the accuracy of the floorplan contained here, measurements of doors, windows, rooms and any other items are approximate and no responsibility is taken for any error, omission or mis-statement. This plan is for illustrative purposes only and should be used as such by any prospective purchaser. The services, systems and appliances shown have not been tested and no guarantee as to their operability or efficiency can be given.
Made with Metropix ©2008



Features

- Sold with NO ONWARD CHAIN
- Private and secluded rear garden
- Bright and spacious living room
- Separate bathroom and W.C
- Close to local amenities
- Share of freehold first floor maisonette
- Two double bedrooms
- Kitchen / dining room ideal for entertaining
- Well-proportioned accommodation throughout
- Excellent transport links nearby



Tenure - Share of Freehold Council Tax Band - C

Aspen Residential Services
77 Church Road, Ashford, Surrey, TW15 2PE
Tel: 01784 252 202
Email: enquiries@aspensalesandlettings.com

